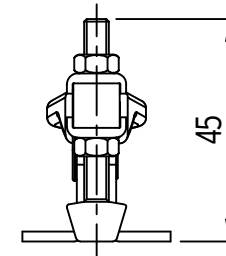
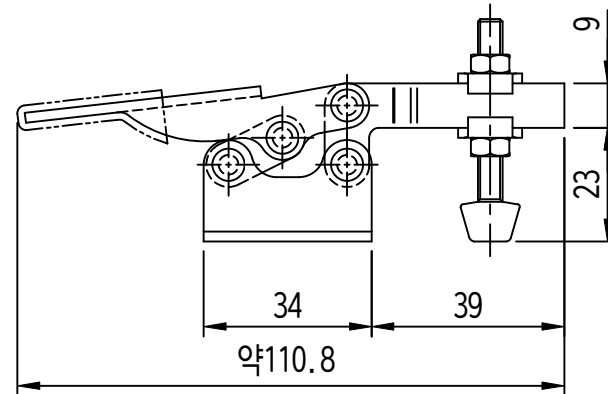
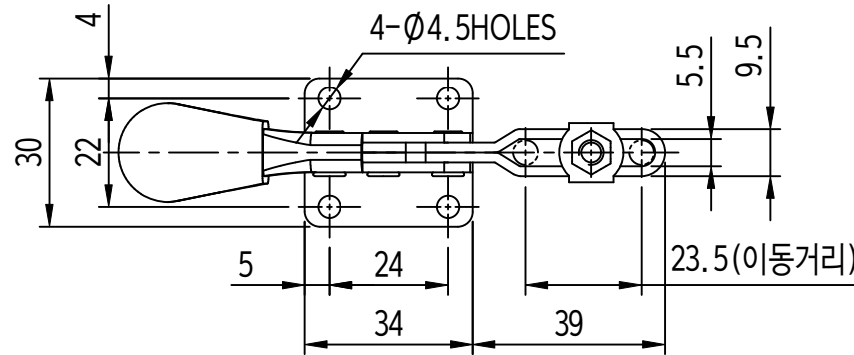


KLW006-21F(S)



주요

1. 샘플송인독한후안할것.
2. 제품초집시작업자가상해를입지않도록날카로운부위를제거한다.
3. 지시하지않은R은자면R로한다.
4. 기타자세한사항은설계자와협의한다.

GENERAL TOLERANCE			
SIZE	LEVEL	LEVEL	LEVEL
1-4	±0.07	±0.10	±0.20
4-6	±0.07	±0.20	±0.25
16-63	±0.10	±0.30	±0.50
63-250	±0.15	±0.55	±1.00
250-500	±0.30	±0.80	±1.50
500-1000	±0.50	±1.50	±2.50

부품명	번호	명칭	수량	재질	비고
Part No.	No.	Part Name	Q'ty	Material	Remarks
21F(S)			1		
CHECKED	CHECKED	APPROVED	DATE	MM	YEAR
			DATE	MM	YEAR
			DATE	MM	YEAR

광원엔지니어링
KWANGL ENGINEERING